

# High-Throughput Extraction of Cannabinoids from Cannabis Analog on the Prep 96 Automated Homogenizer

Caleb Proctor, Shelby Soldat, Brandon Easparro, Dr. Rodney Nash, Dr. James Atwood III  
Omni International, Inc.

## Introduction

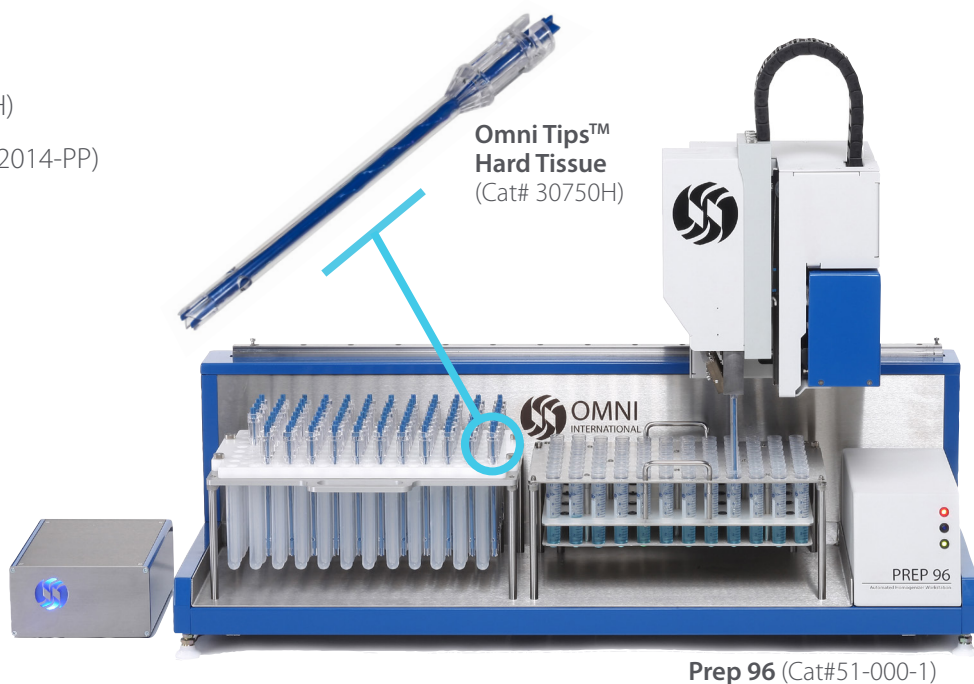
Cannabinoid quantification ("Potency Testing") is the most common analytical method performed by cannabis producers and testing facilities. Producers are required to define the quantity of cannabinoids in cannabis based products before release to the market. While there are regional variations in potency testing requirements and more than 60 cannabinoids present in cannabis, producers are typically required to define the quantity of the abundant and psychoactive cannabinoids, Tetrahydrocannabinol (THC), Tetrahydrocannabinolic Acid (THCA), Cannabidiol (CBD), Cannabidiolic Acid (CBDA), Cannabigerol (CBG), and Cannabinol (CBN) (Figure 1).<sup>1-2</sup>

The most common method for cannabis potency testing is to mill the flower or edibles to create a homogenous mixture in the presence of an organic solvent such as methanol. Following centrifugation to pellet debris, the supernatant is further diluted prior to analysis by reverse phase HPLC or mass spectrometry. While the analytical methods are well defined and easily automated, the sample disaggregation process is low throughput and often tedious. Herein, we evaluate the utility of the Prep 96 automated homogenizer for the extraction of cannabinoids from a spiked cannabis analog.

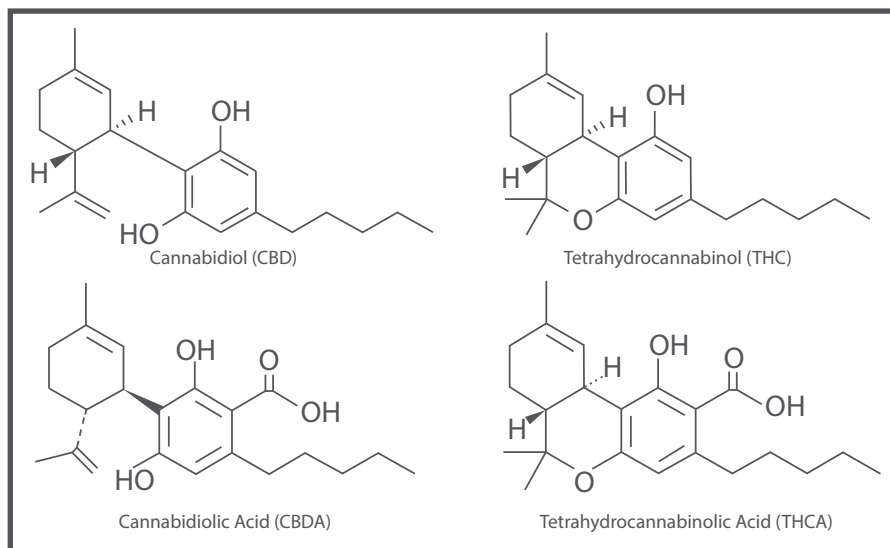
## Materials and Methods

### Equipment

- Prep 96 (Cat#51-000-1)
- Omni Tips™ Hard Tissue (Cat# 30750H)
- 14 mL round bottom tubes (Cat #00-2014-PP)
- 1 mg/mL THC (Cerilliant Cat# T-005)
- 1 mg/mL THCA (Cerilliant Cat# T-093)
- 1 mg/mL CBD (Cerilliant Cat# C-045)
- 1 mg/mL CBDA (Cerilliant Cat# C-144)
- Raptor ARC-18 150mmx4.6mm, 2.7  $\mu$ m (Restek Cat# 9314A65)
- Waters 1525 HPLC with 2996 photodiode array detector



**OMNI**  
International  
The Homogenizer Company®



**Figure 1.** CBD, CBDA, THC and THCA structure. The four cannabinoids were purchased as 1 mg/mL standards and used in this analysis.

### Cannabinoid Standards

THC, THCA, CBD and CBDA, 1 mg/ml standards were obtained from Cerilliant. All standards were combined to create a stock solution with a concentration of 250 ppm for each cannabinoid. Serial dilutions were created in 100% methanol following the dilution series in Table 1. Fifteen  $\mu\text{L}$  of each dilution was diluted further with 35  $\mu\text{L}$  of 100% methanol and analyzed by reverse phase HPLC.

| Concentration | Amount of parent solution | Methanol          |
|---------------|---------------------------|-------------------|
| 250 ppm       | Stock Solution            | 0                 |
| 125 ppm       | 500 $\mu\text{L}$         | 500 $\mu\text{L}$ |
| 62.5 ppm      | 500 $\mu\text{L}$         | 500 $\mu\text{L}$ |
| 31.25 ppm     | 500 $\mu\text{L}$         | 500 $\mu\text{L}$ |
| 15.625 ppm    | 500 $\mu\text{L}$         | 500 $\mu\text{L}$ |
| 7.81 ppm      | 500 $\mu\text{L}$         | 500 $\mu\text{L}$ |

**Table 1.** Cannabinoid serial dilution strategy. Each parent solution was diluted 2X in methanol.

## Sample Preparation

As Omni International is based in Georgia, obtaining cannabis samples for analysis, is not yet legal. As a cannabis analog, fresh hops were obtained. Ten grams of fresh hops were milled in a coffee grinder to a fine powder. Seven, 1 gram samples of hops powder was placed in 14 mL round bottom tubes. As a control, 5 mL of 100% HPLC grade methanol was added to the ground hops. The sample was incubated with gentle manual mixing for two minutes then 250  $\mu$ L was extracted for centrifugation. Six 1 g powdered hops samples were spiked with 1 mL of 250 ppm cannabinoid standard mixture. The standards were allowed to absorb into the hop powder for 2 minutes. Four mL of 100% methanol was then added to create a cannabinoid standard concentration of 50 ppm. The samples were then processed on the Prep 96 homogenization workstation equipped with 7 mm Omni Tip plastic rotor-stator probes at the speeds and durations listed in table 2. Following homogenization, 250  $\mu$ L was extracted and placed in a 1.5 mL microcentrifuge tube. The samples were then centrifuged at 10,000 g for 10 minutes to pellet insoluble debris and the supernatant was transferred to the bed of a 0.2  $\mu$ m spin filter. The supernatant was filtered over the 0.2  $\mu$ m filter, at 1,000 g, for 1 minute. Fifteen  $\mu$ L filtrate was further diluted with 35  $\mu$ L of 100% methanol. The samples were then analyzed by HPLC.

| Processing                  | Duration                | Extraction  |
|-----------------------------|-------------------------|-------------|
| No homogenization (Control) | 2 minutes of incubation | 0           |
| 25,000 rpm                  | 10 sec                  | 250 $\mu$ L |
| 25,000 rpm                  | 20 sec                  | 250 $\mu$ L |
| 25,000 rpm                  | 30 sec                  | 250 $\mu$ L |
| 25,000 rpm                  | 60 sec                  | 250 $\mu$ L |
| 25,000 rpm                  | 120 sec                 | 250 $\mu$ L |

**Table 2.** Prep 96 parameters. The control was not homogenized and was gently swirled. 250  $\mu$ L was extracted after processing.

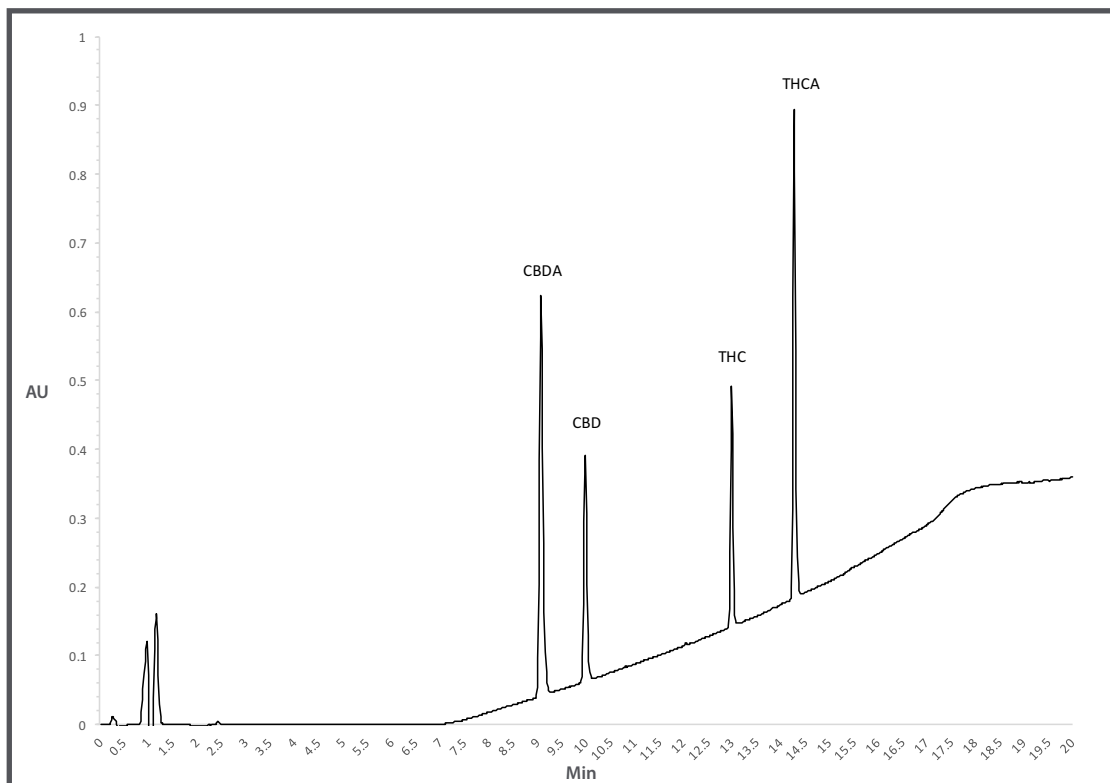
## Reverse Phase HPLC

Cannabinoid separation and quantification was performed on a Waters 1525 HPLC equipped with a binary pump and photodiode array detector. Buffer A was DDH<sub>2</sub>O and formic acid (0.2% v/v) and buffer B was Acetonitrile and formic acid (0.2% v/v). Fifteen  $\mu$ L of each sample was separated on a Raptor ARC-18 150 mm x 4.6mm, 2.7  $\mu$ m column over a 20-minute linear gradient from 60% B to 100% B at a flow rate of 1.5 mL/min. Absorbance was measured at 280 nM.

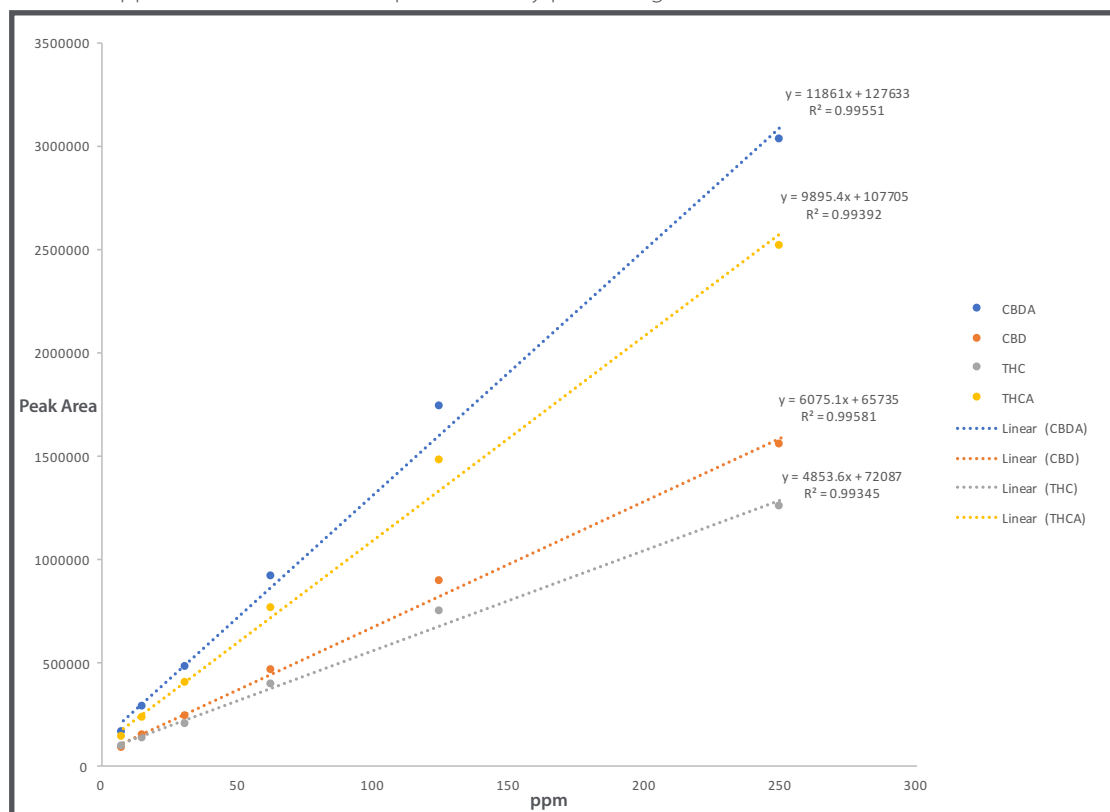


## Results

Four pure cannabinoids (THC, THCA, CBD and CBDA) were combined, serially diluted and analyzed by reverse phase HPLC as shown in figures 2-3. The HPLC method was able to accurately quantify the cannabinoids from a concentration range of 7 ppm to 250 ppm at an RSD of 0.99. The order of elution was CBDA, CBD, THC and THCA respectively.

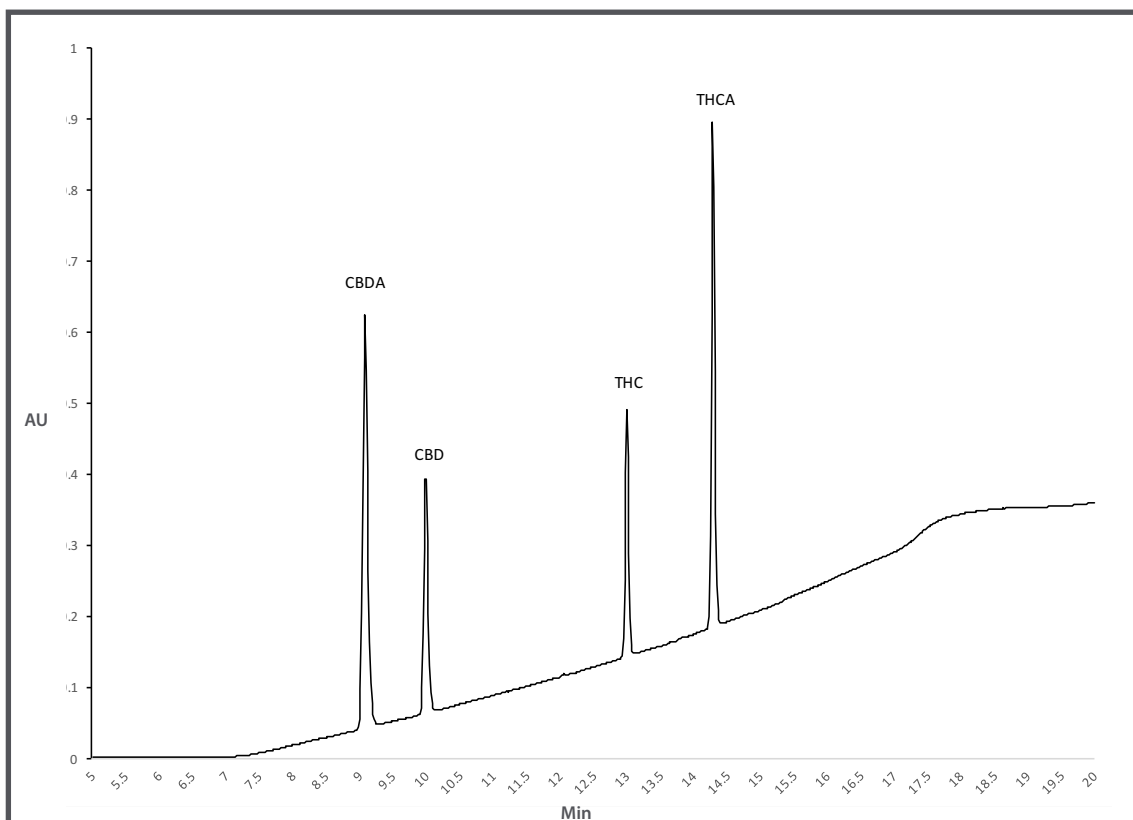


**Figure 2.** Reverse phase HPLC analysis of CBDA, CBD, THC and THCA at a concentration of 250 ppm. Quantification was performed by peak integration at 228 nm.

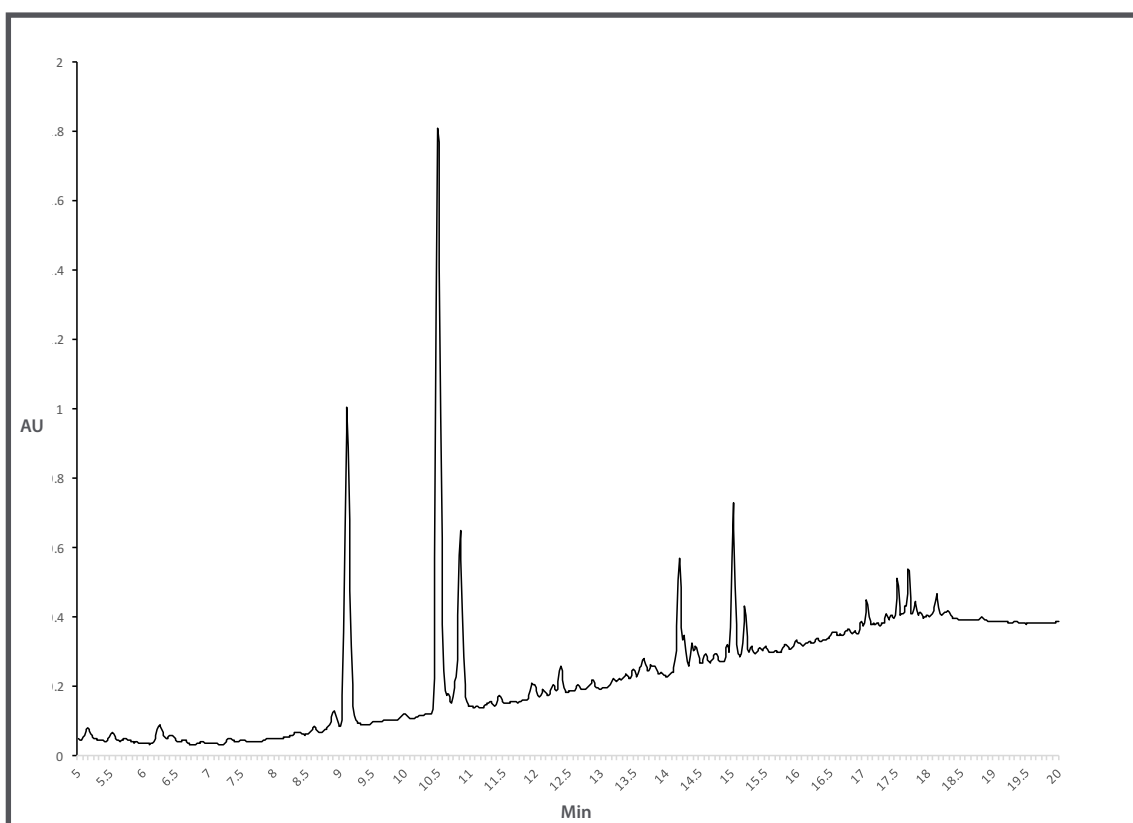


**Figure 3.** Calibration curves of cannabinoids with linear fit applied. Concentration of unknowns were determined by comparing the peak area to the calibration curve.

As a control, an extract of powdered hops was analyzed to determine if there were compounds originating from the plant material that would co-elute with the spiked cannabinoid standards. Two abundant peaks were present from native plant compounds eluting at 9 mins and 12 minutes that co-eluted with CBDA and THCA (Figures 4A and B).



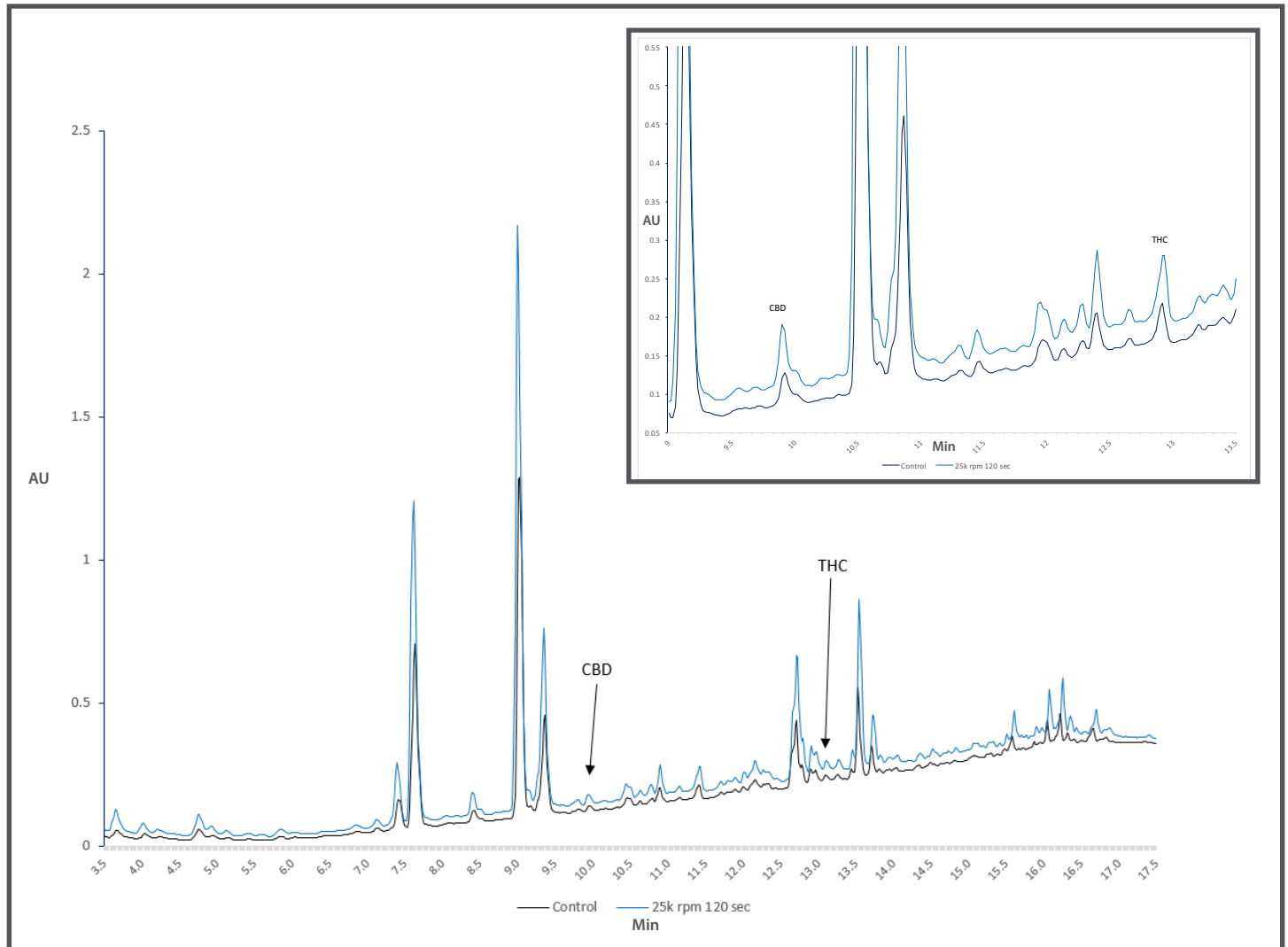
**Figure 4. A.** Cannabinoid 250 ppm standard showing elution of CBDA (9.039 min), CBD (9.979 min), THC (12.988 min) and THCA (14.264 min).



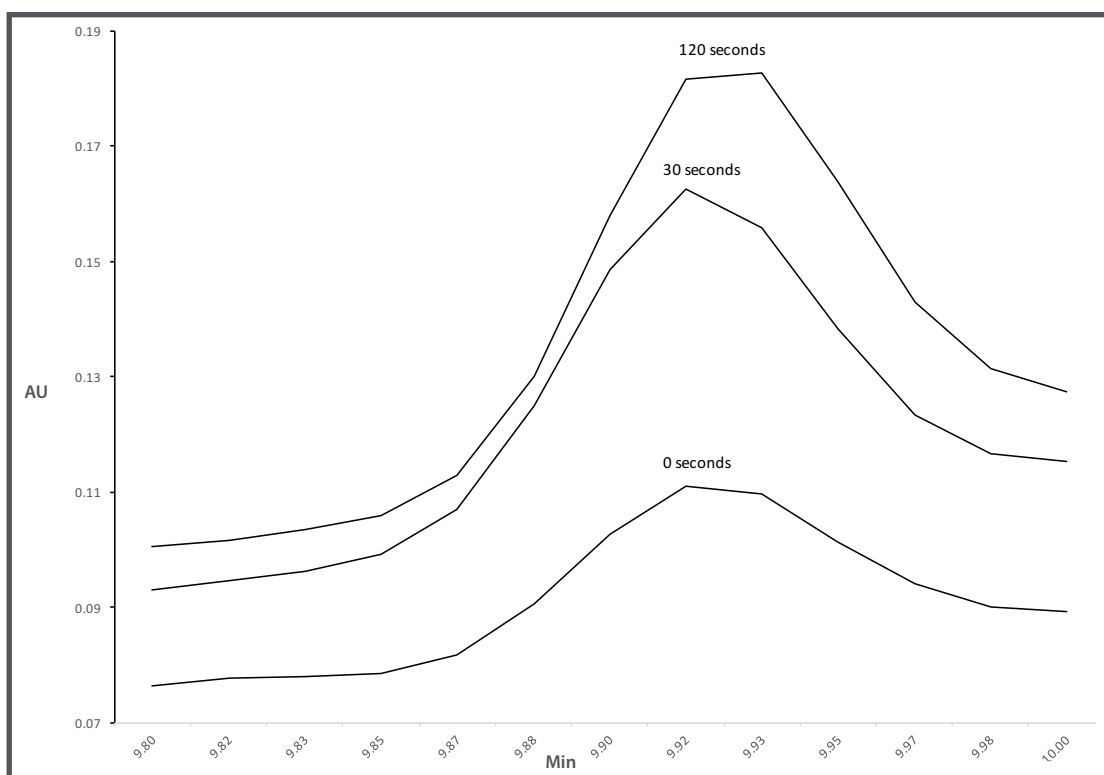
**Figure 4. B.** UV chromatogram of methanol extracted hops without cannabinoids. Abundant peaks at 9-9.2 min and 14-14.5 min were observed that would co-elute with CBDA and THCA.

Based on these findings, it was determined that extraction efficiency would be measured for CBD and THC only (eluting at 9.9 min and 13 min respectively). Peak areas from the controls were recorded at times 9.9 min and 13 min and used as a background subtraction to obtain accurate peak areas from the spiked samples.

Reverse phase HPLC analysis of the spiked hops indicated that a 16-20% recovery was obtained from the gently manual mixing. As homogenization times were extended, recovery was increased, with 89-100% recovery being obtained after 120 seconds of sample disaggregation (Figure 5-6 and Table 3).



**Figure 5.** Reverse phase HPLC UV chromatogram of spiked hops with no homogenization and 120 secs of homogenization at 25k rpm. The insert shows the chromatogram from 9-13.5 minutes. Increased peak areas for CBD and THC are observed for the 120 seconds of homogenization time as compared to the methanol extraction only.



**Figure 6.** HPLC UV chromatograms for CBD at 0, 30 sec and 120 sec of homogenization time from spiked hops.

| Homogenization Time (sec) | Calculated Concentration |           | % Recovery |      |
|---------------------------|--------------------------|-----------|------------|------|
|                           | CBD (ppm)                | THC (ppm) | CBD        | THC  |
| 0                         | 12.4                     | 8.1       | 24.8       | 16.2 |
| 10                        | 42.8                     | 30.7      | 85.6       | 61.4 |
| 20                        | 42.9                     | 33.4      | 85.9       | 66.8 |
| 30                        | 47.3                     | 37.1      | 94.5       | 74.3 |
| 60                        | 42.5                     | 44.5      | 90.0       | 89.0 |
| 120                       | 53.4                     | 44.7      | 106.9      | 89.5 |

**Table 3.** CBD and THC recovery as a function of homogenization time.

## Conclusions

Ground hops was used as a cannabis analog to evaluate CBA and THC recovery using purchased standards at a concentration of 50 ppm. 89 to 100% recovery was obtained using a rotor-stator homogenization method as deployed in an automated method using the Prep 96 automated homogenizer as compared to 16 to 25% recovery with a manual mixing method.

## References

- Leghissa A, Hildenbrand Z, Foss F, Schug K. Determination of cannabinoids from a surrogate hops matrix using multiple reaction monitoring gas chromatography with triple quadrupole mass spectrometry. J Sep Sci. 2018, 41; 459-468.
- Giese M, Lewis M, Giese L, Smith K. Development and validation of a reliable and robust method for the analysis of cannabinoids and terpenes in cannabis. J AOAC Inter. 2015, 98; 1503-1522.